

MLCV2496

SMPS 24V4A



- Protections: Short circuit / Overload / Over voltage
- Cooling by free air convection
- LED indicator for power on
- 100% full load burn-in test
- All using 105°C long life electrolytic capacitors
- Withstand 300VAC surge input for 5 second
- High operating temperature up to 70°C
- High efficiency, long life and high reliability

Product benefits

- Wide Operating Range 185-264VAc
- Safety requirement due to Input Over Voltage, O/P overload-S/C, over temperature Auto recovery protections,
- High efficiency and reliability,
- High quality Components

Product features

- Supply voltage: 220...240 V
- Line frequency: 50 Hz | 60 Hz
- Line voltage: 185...264 Vac
- Safety according to EN 61347-1, 61347-2-13, 62384
- EMI CE suppression: to EN 55015A
- Line harmonics according to EN 61000-3-2
- Immunity according to EN 61547
- Lifetime: up to 50,000 h (temperature at $T_c = 65^\circ\text{C}$, max. 10 % failure rate)

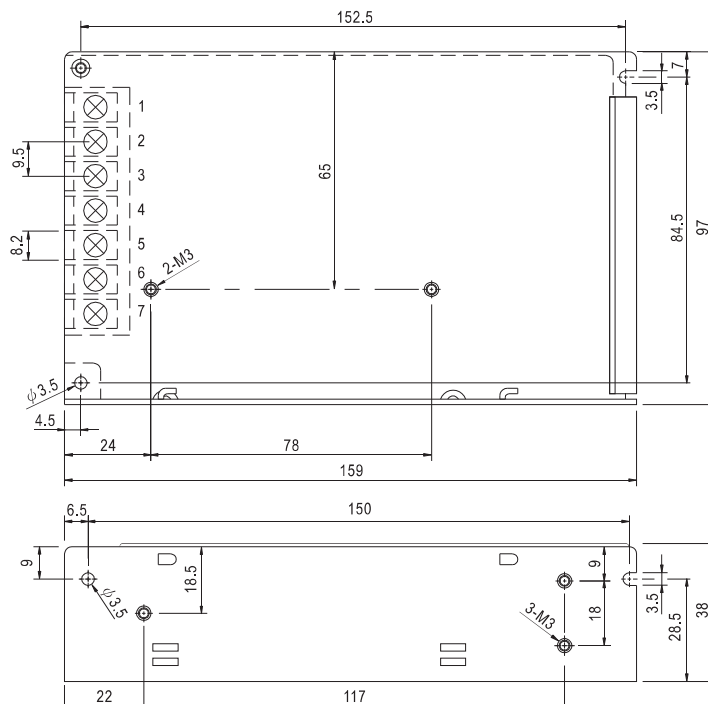
Product datasheet

Technical data

Electrical data

Nominal voltage	220...240 V
Mains frequency	50...60 Hz
Input voltage AC	185...264 Vac
ECG efficiency	>85 %
Device power loss	<4.0 W
Inrush current	Max.40A @full load 230VAc-Cold Start
Max. ECG no. on circuit breaker 10 A (B)	38
Max. ECG no. on circuit breaker 16 A (B)	60
Max. ECG no. on circuit breaker 25 A (B)	90
Surge capability (L/N-Ground)	2.5 kV
Surge capability (L-N)	2 kV
Nominal output voltage	24VDC
U-OUT (working voltage)	23.2~25.2VDC
Nominal output current	@3.5A
Output current tolerance	±5 %
Output ripple (@100 Hz)	< 2 %
Nominal output power	<96>w
Galvanic isolation	SELV

Dimensions



Product datasheet

Mounting hole spacing, width	34.0 mm
Product weight	145.00 gm
Cable cross-section, input side	0.5...1.5 mm ²
Cable cross-section, output side	0.5...1.5 mm ²
Wire preparation length, input side	6.5...7.5 mm
Wire preparation length, output side	6.5...7.5 mm

Colors & materials

Casing material	Sheet Metal + Aluminium
-----------------	-------------------------

Temperatures & operating conditions

Ambient temperature range	-20...+50 °C
Maximum temperature at tc test point	75 °C
Max.housing temperature in case of fault	110 °C
Permitted rel. humidity during operation	5...85 %

Lifespan

ECG lifetime	min.50,000 h *
--------------	----------------

* At T_{case} = 65°C at T_c point / 10% failure rate

Additional product data

Encapsulated	No
--------------	----

Capabilities

Dimmable	No
Overheating protection	Auto-recovery
Overload protection	Auto-recovery
Short-circuit protection	Auto-recovery
No-load proof	Yes
Max. cable length to lamp/LED module	1 meter
Suitable for fixtures with prot. class	I / II
Type of connection, output side	Bakelite Connector

Certificates & standards







Approval marks – approval	CE
Standards	Acc. to IEC 61347-1/Acc. to IEC 61347-2-13/Acc. to IEC 62384/Acc. to CISPR 15/Acc. to IEC 61000-3-2/Acc. to IEC 61547/Acc. to IEC 61000-3-3
Type of protection	IP20

Product datasheet

Logistical data

Temperature range at storage	-40...85 °C
------------------------------	-------------

Download Data

File
 Product Data sheet.pdf
 Brochure CC Drivers
 ROHs & WEEE Decl.pdf
 EMI-CE report.pdf
 EFT Test Report.pdf
 CAD data.zip

Logistical Data

Product code	Product description	Packaging unit (Pieces/Box)	Dimensions (length x width x Volume height)	Gross weight
MLCV2496	SMPS	Per tray 20pc	240 mm x 210 mm x 80 mm	3.16 kg
MLCV2496	SMPS	Shipping carton box100/Box (5 Trays/Box)	240 mm x 210 mm x 80 mm	3.70 dm ³ 19.00 Kg

The mentioned product code describes the smallest quantity unit which can be ordered. One shipping unit can contain one or more single products. When placing an order, for the quantity please enter single or multiples of a shipping unit.

Ordering Information:

M	L	C	V	1	2	9	6	X
				O/P Voltage		O/P Power		
MELCON	LED	C-Constant F-Flicker Free D- Dimming M- Master S- Slave	A- Analog Dim B-Bluetooth C-Current D-Dali Dim P-PWM Dim R-Potentiometer S-Switch(AOI) T-Triac Dim V-Voltage W-Wi-Fi Z-Zigbee					

Version Change History:

Sr.	Revision	Notes	Date