

MELCON RGB SIMULATOR INSTALLATION INSTRUCTION SHEET

Thank you for choosing MELCON LED Simulator and LED Products for installation. Please follow the bellow mentioned installation procedure.

- Step 1: Click to install



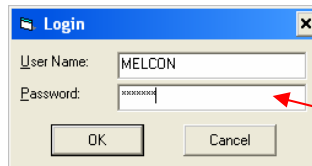
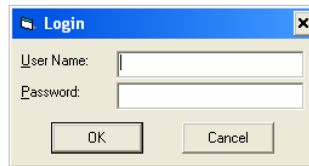
MelconRGBLedSimulator.msi

- Step 2: After successful installation click on RGB Simulator Icon indicated:



RGBLedSimulator.LNK

- Step 3: Enter user name and password provided to log-in.



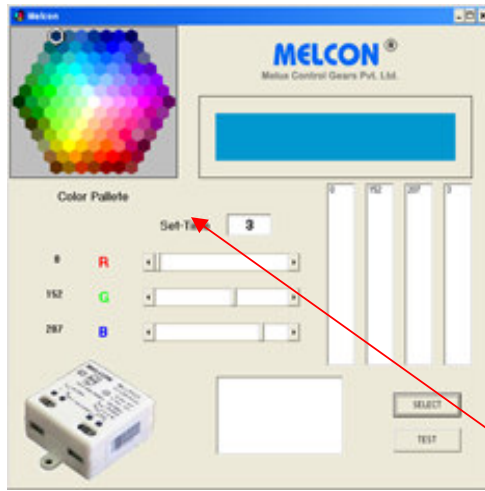
Login Name and password

- Step 4: After successful Login screen indicated bellow will proceed indicating in process...



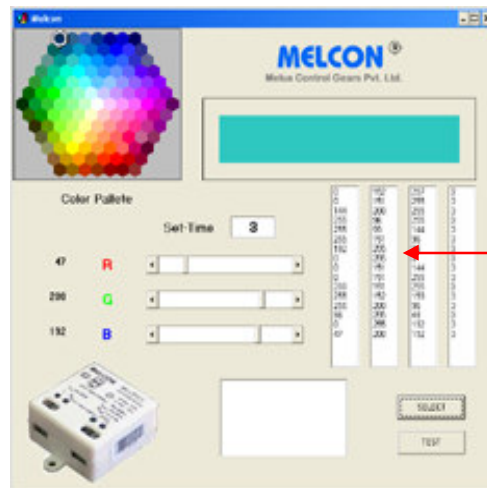
Wait for some time to pop-up new Window.....

- Step 5: Colour and time selection:

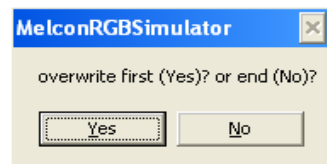


Select colours and fed time as per choice

Every time click select and selection colour coordinates will be highlighted in RGB and Time windows as indicated bellow,

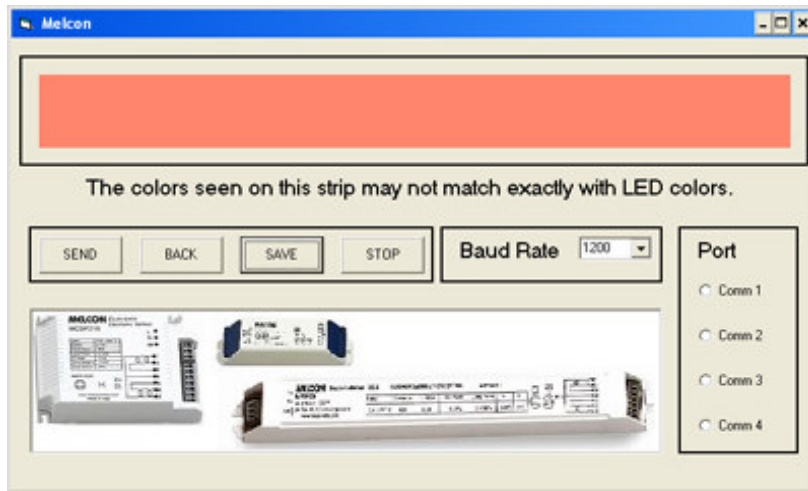


Enter combinations 16 times, till it ask....

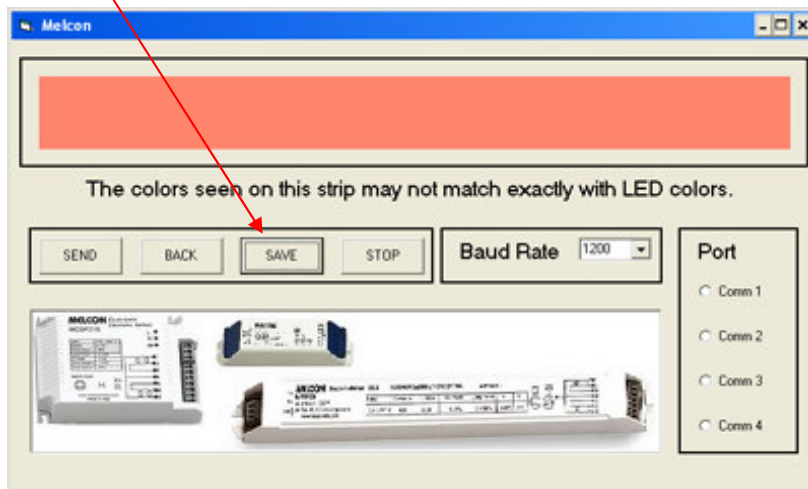


Enter No to proceed....

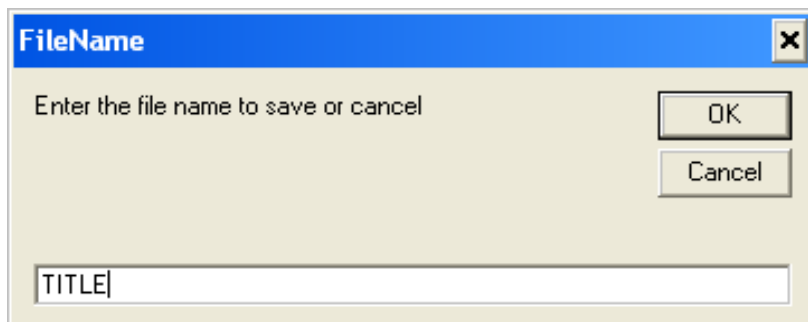
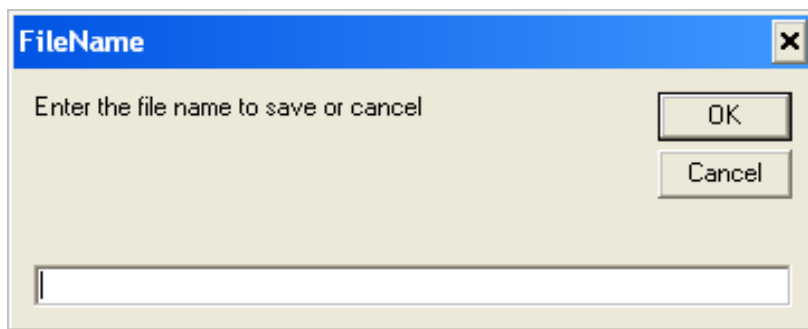
- Step 6 : After completion of colour and time selections click 'TEST' Icon which will pop-up a new window indicating colour pattern you programmed as shown in bellow window...



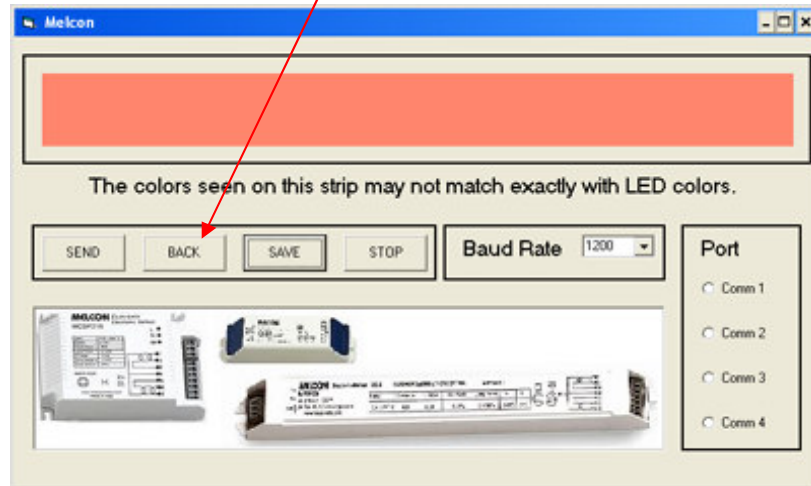
- Step 7: You can 'SAVE' the same program giving file name of your choice.



A window will pop-up for File name to enter of your choice to save at respective location.

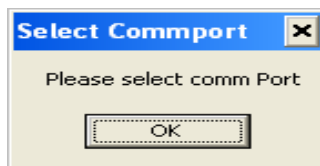


- Step 8: If you don't like or modify, click 'BACK' to re-program...



- Step 9: If program is as per your choice and saved you may connect DB9 connector to Model: RGB Master via USB port and transmit data to program Master. Procedure is as bellow:
 1. Select Port
 2. Select Baud Rate to 9600 [Ideal Standard]
 3. click 'SEND' Icon

If proper port is not selected 'Communication Error' or 'COM PORT' selection error indication will appear on screen as indicated bellow....



If entered Invalid port message window indicated bellow will appear....



After successful programming a Pop-up message indication will provide information of programming process and also for successful communication completion.

If you find any problem or need any more information please send mail to: technical@melconindia.com

For More Information and details of products visit: www.melconindia.com